

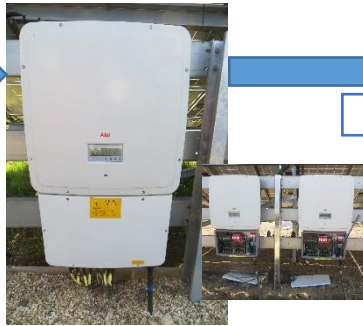


9372 solar PV modules

- 22 modules per "string"
- 426 strings in total
- 10 miles of panels!



DC current



64 inverters

- 6 or 7 strings feed each inverter
- about 150 panels per inverter
- maximum output of 30kW per inverter



AC current



7 Distribution Boards

- 6 DBs fed by 10 inverters, 7th fed by 4 inverters



400 volts



SSE Substation

- contains 11kV switchgear

11000 volts



Burnell cabin contains:

- step-up Transformer (400V to 11000V)
- meter showing total power generated
- communications equipment for remote monitoring of the entire solar farm



11000 volts



Point of Connection

- where the electricity generated on the solar farm enters the Grid



Metering Cabinet contains:

- Main and Check meters for exported and imported power

West Solent Solar Cooperative Ltd

Diagram of 2.4 MW solar farm at Lymington, Hampshire

CMCook 17.11.2014

