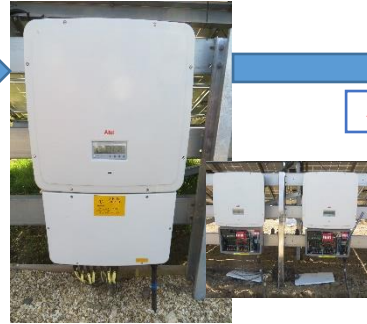




9372 solar PV modules

- 22 modules per "string"
- 426 strings in total
- 10 miles of panels!

DC current



64 inverters

- 6 or 7 strings feed each inverter
- about 150 panels per inverter
- maximum output of 30kW per inverter

AC current



7 Distribution Boards

- 6 DBs fed by 10 inverters, 7th fed by 4 inverters

400 volts

11000 volts



SSEN Substation

- contains 11kV switchgear



Transformer cabin contains:

- Cast resin **Transformer** which steps up voltage from 400V to Grid voltage (11000V)
- Meter showing total power generated
- Communications equipment for remote monitoring of the entire solar farm

11000 volts



Point of Connection

- where the electricity generated on the solar farm enters the Grid



Metering Cabinet contains:

- Main and Check meters for exported and imported power

West Solent Solar Cooperative Ltd

Diagram of 2.4 MW solar farm at Lymington, Hampshire

CMCook 19.5.2023

